

Welcome to today's **University Business** web seminar

Data in a Time of Crisis: The Importance of IR During (and After) COVID-19



Kurt Eisele-Dyrli
Web Seminar Editor
University Business



James Cousins
Analyst Manager
Rapid Insight



Drew Thiemann
Director of Institutional
Research &
Effectiveness
Bellarmine University
(Ky.)



Laura Miller
Director of Institutional
Research
Messiah College (Penn.)



Joseph Harrod
Associate Vice President
for Institutional
Effectiveness
Southern Baptist
Theological Seminary
(Ky.)

Thank you for joining us! The web seminar will start promptly at 2:00 ET.

Welcome to today's **University Business** web seminar

Data in a Time of Crisis: The Importance of IR During (and After) COVID-19

Thank you for joining us! The web seminar will start shortly at 2:00 ET.

For technical support:

Use the Chat panel at the right of your screen. Select the name of our event producer Jason York, and type your message.

"Chat" for tech support

No computer speakers? Prefer to listen privately?

Dial the phone number and access code posted in the Chat window.

"Q&A" for panelist questions

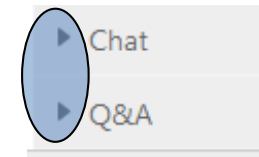
To submit a question to our panel:

Use the Q&A panel at the right of your screen. Send your question to All Panelists, the default option.

Ask:

Don't see a panel?

Click the "expand panel" triangle in front of the panel name.



Need to access the presentation at a later time?

Everyone will receive an email with links to the slides and the archive recording.

Data in a Time of Crisis: The Importance of IR During (and After) COVID-19



Kurt Eisele-Dyrli
Web Seminar Editor
University Business



James Cousins
Analyst Manager
Rapid Insight



Drew Thiemann
Director of Institutional
Research &
Effectiveness
Bellarmino University
(Ky.)



Laura Miller
Director of Institutional
Research
Messiah College (Penn.)



Joseph Harrod
Associate Vice President
for Institutional
Effectiveness
Southern Baptist
Theological Seminary
(Ky.)

This web seminar is sponsored by:



Data in a Time of Crisis: The Importance of IR During (and After) COVID-19



Kurt Eisele-Dyrli
Web Seminar Editor
University Business



James Cousins
Analyst Manager
Rapid Insight



Drew Thiemann
Director of Institutional
Research &
Effectiveness
Bellarmine University
(Ky.)



Laura Miller
Director of Institutional
Research
Messiah College (Penn.)



Joseph Harrod
Associate Vice President
for Institutional
Effectiveness
Southern Baptist
Theological Seminary
(Ky.)

Housekeeping

Data in a Time of Crisis: The Importance of IR During (and After) COVID-19

For technical support:

Use the Chat panel at the right of your screen. Select the name of our event producer, Jason York, and type your message.



“Chat” for tech support

No computer speakers? Prefer to listen privately?

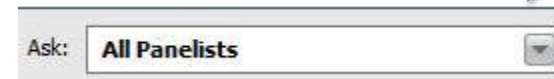
Dial the phone number and access code posted in the Chat window.

To submit a question to our panel:

Use the Q&A panel at the right of your screen. Send your question to All Panelists, the default option.



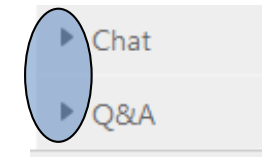
“Q&A” for panelist questions



Ask:

Don't see a panel?

Click the “expand panel” triangle in front of the panel name.



Need to access the presentation at a later time?

Everyone will receive an email with links to the slides and the archive recording.

Data in a Time of Crisis: The Importance of IR During (and After) COVID-19



Kurt Eisele-Dyrli
Web Seminar Editor
University Business



James Cousins
Analyst Manager
Rapid Insight



Drew Thiemann
Director of Institutional
Research &
Effectiveness
Bellarmine University
(Ky.)



Laura Miller
Director of Institutional
Research
Messiah College (Penn.)



Joseph Harrod
Associate Vice President
for Institutional
Effectiveness
Southern Baptist
Theological Seminary
(Ky.)

Data in a Time of Crisis: The Importance of IR During (and After) COVID-19

April 30, 2020 | 2:00 PM ET



Drew Thiemann
Director of Institutional
Research & Effectiveness
Bellarmine University



Laura Miller
Director of Institutional
Research
Messiah College



Joe Harrord
AVP for Institutional
Effectiveness
The Southern Baptist
Theological Seminary

About Rapid Insight



Predictive analytics and data preparation software company empowering professionals of all skill levels to turn raw data into actionable insights



Founded in 2002 and headquartered in Conway, NH



Serving thousands of customers worldwide, ranging from healthcare to higher education



Code free (but code friendly) self-service analytics platform



The Rapid Insight platform enables users to easily build predictive models, perform advanced data analysis, and share insights

The Speakers

Drew Thiemann

- Director of Institutional Research & Effectiveness at Bellarmine University
- Master's in Public Policy and Administration
- 14 years as an IR director / registrar
- IR&E at Bellarmine reports to the Vice Provost for Assessment, Accreditation, and Institutional Effectiveness



Laura Miller

- Director of Institutional Research at Messiah College
- M.S. in Child Development and Family Studies
- 11 years in the field of IR
- IR at Messiah College Reports to the Vice President for Finance & Planning



Joe Harrod

- AVP for Institutional Effectiveness, The Southern Baptist Theological Seminary
 - Twelve years in role
 - Handle IE/IR and accreditation tasks
 - Trying to process work without coffee shops!



QUESTION:

What types of data are useful in a time of crisis?

Are there differences in how data needs to be shared and put to use?

question: what types of data are useful in a time of crisis? are there differences in how data needs to be shared and put to use?

Laura's Take:



- Inventory data collection that is happening in real time
- Consider launching a survey to current students
- Forecast short and long-term impact on enrollment and budget assumptions

QUESTION:

What types of data are useful in a time of crisis?

Are there differences in how data needs to be shared and put to use?

question: what types of data are useful in a time of crisis? are there differences in how data needs to be shared and put to use?

Joe's Take:



- Enrollment data
- Need to be distributed to dispersed offices/stakeholders
- Updated daily (or more frequently)

QUESTION:

How does a crisis like COVID-19 emphasize the importance of IR and data literacy at a college or university?

Joe's Take:



- “Great Disruption” has shaken sense of business as usual and emphasized need for data-informed decisions
- Data is now centerpiece of all news reporting and raises awareness of quality and accuracy for key decisions.

QUESTION:

How does a crisis like COVID-19 emphasize the importance of IR and data literacy at a college or university?

QUESTION:

How does a crisis like COVID-19 emphasize the importance of IR and data literacy at a college or university?

question: how does a crisis like COVID-19 emphasize the importance of IR and data literacy at a college or university?

Laura's Take:



- Pregame or follow-up with individuals regarding the information shared
- Ask others to review your work

QUESTION:

**How can data inform future
institutional preparedness efforts?**

Laura's Take:



- New pathways to data are quickly being found and barriers to data are being realized
- More time is spent now than ever before scenario planning among all divisions of the college
 - IR offices should also be thinking about their own scenario planning

QUESTION:

**How can data inform future
institutional preparedness efforts?**

Joe's Take:



- This challenge has forced us to explore simplified ways of presenting key data.
- Can help reinforce strategic planning by showing that “one day” really can come with little warning.

Audience Questions!

QUESTION:

Have responsibilities for your team members been re-delegated to cover new needs?

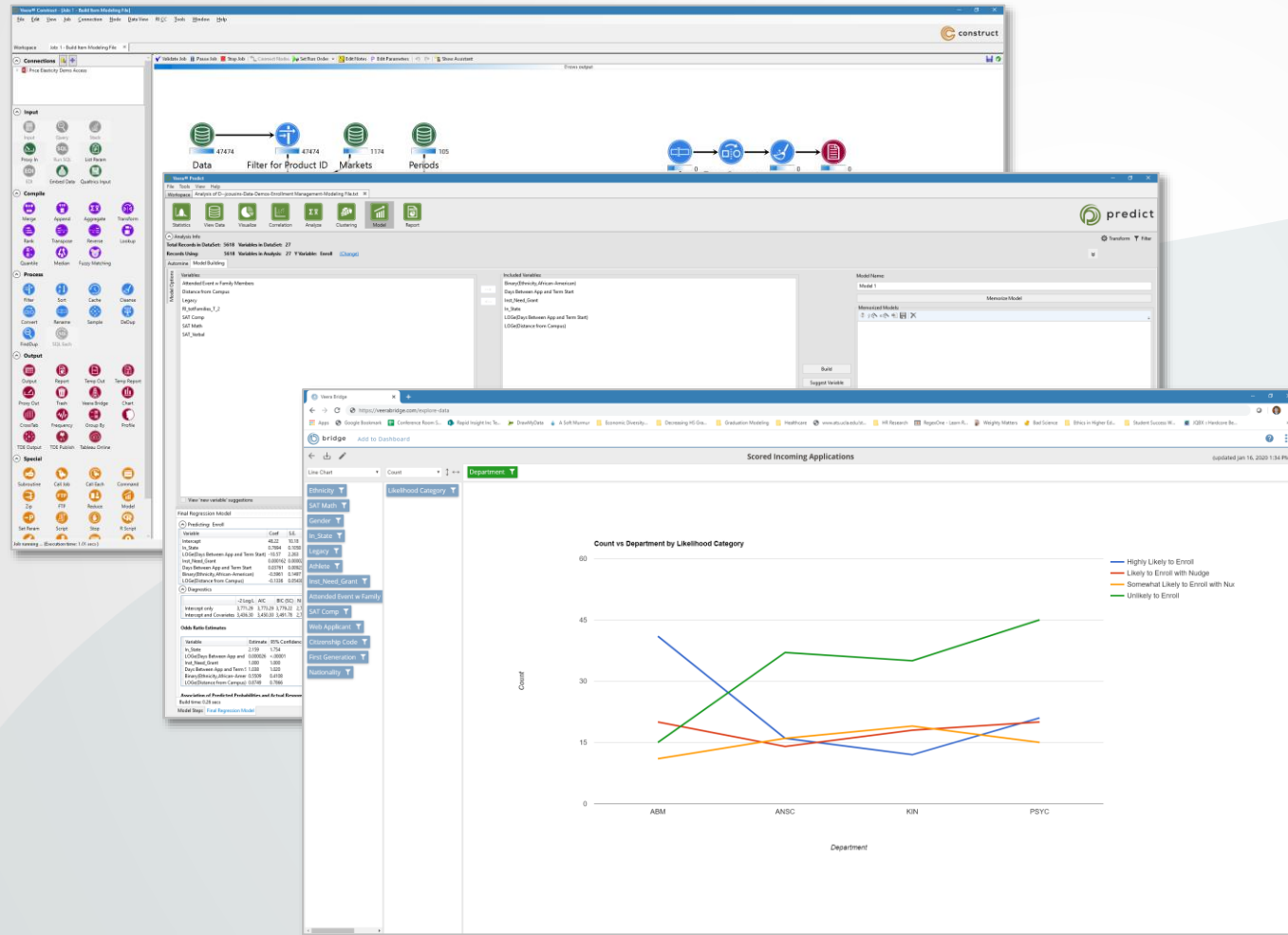
QUESTION:

What types of curriculum-related data is your institution seeking for building out online classes, if any?

QUESTION:

How do you plan to keep IR's importance front-of-mind after COVID-19 resolves?

Rapid Insight's Platform



Combine, prepare, and explore your data in an easy drag-and-drop workspace



Build powerful, transparent predictive models that identify trends and forecast outcomes



Make data accessible to your entire organization with cloud-based visual dashboards

Rapid Insight's Platform in Action

your data
sources



data preparation
using construct

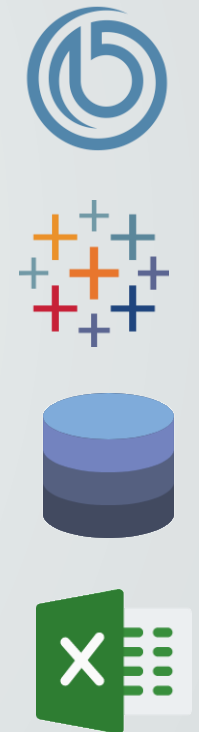


predictive modeling
using predict



output directly to
your data
destination(s)

your data
destinations



Revolutionize IR's impact on campus

Get a free personalized demo of our powerful software

rapidinsight.com/demo-request/



Drew Thiemann
Director of Institutional
Research & Effectiveness
Bellarmine University



Laura Miller
Director of Institutional
Research
Messiah College



Joe Harrord
AVP for Institutional
Effectiveness
The Southern Baptist
Theological Seminary

Data in a Time of Crisis: The Importance of IR During (and After) COVID-19

Q&A



Kurt Eisele-Dyrli
Web Seminar Editor
University Business



James Cousins
Analyst Manager
Rapid Insight



Drew Thiemann
Director of Institutional
Research &
Effectiveness
Bellarmine University
(Ky.)

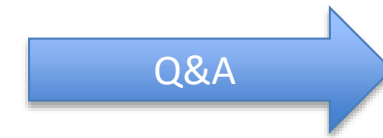


Laura Miller
Director of Institutional
Research
Messiah College (Penn.)



Joseph Harrod
Associate Vice President
for Institutional
Effectiveness
Southern Baptist
Theological Seminary
(Ky.)

Have a question for our presenters? Submit it through the [Q&A](#) at the right.

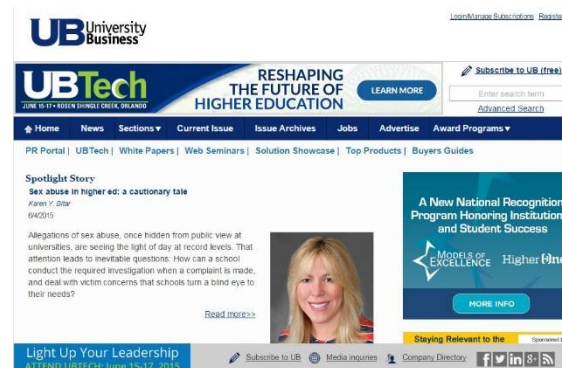


University Business is the leader in editorial coverage of news, trends and current issues in higher education.

Subscribe for FREE and stay up-to-date through our print magazine, digital edition, enewsletters and web seminars.



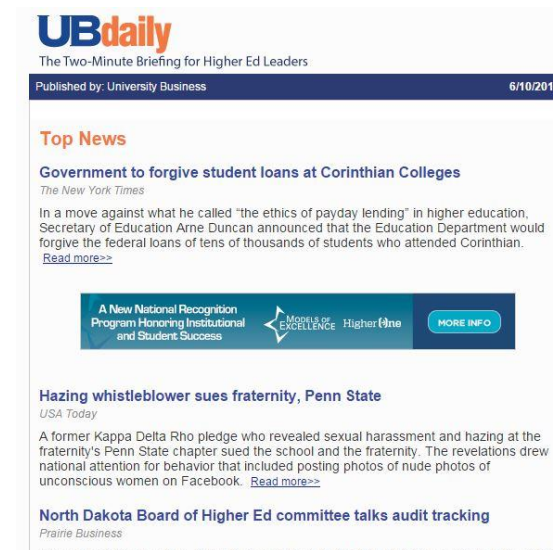
Print magazine



Digital edition and website



Web seminars



UB Daily, and other enewsletters

Thank you for joining us!

The archive recording of this web seminar will be available for you to review, or share with members of your team, at:

<http://www.UniversityBusiness.com/Web-Seminars>

You will also receive an email with a link to the slides.